

A red circle containing a white lowercase letter 'i', representing an information icon.

PRODUCT INFORMATION

# CMC4000

Chassis Member Check

Camera Radio System

Frame alignment for commercial vehicles  
PC-based camera radio system



## Product description

The successful AXIS series for axle alignment on commercial vehicles was extended by the mobile frame alignment CMC4000.

This enables problem-free accurate statements concerning the actual status of the vehicle frame.

**With the help of the CMC4000 one can record:**

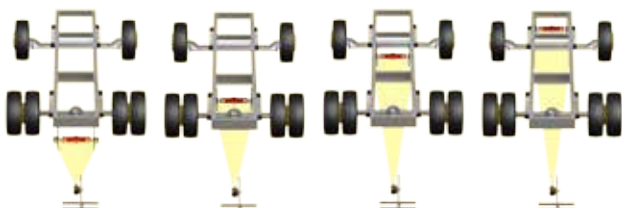
- the **lateral deformation** (horizontal deviation)
- the **height difference** (vertical deviation)
- the **torsion** of the vehicle frame

## Product features

- Quick attachment of frame scale inside the chassis - disassembly of various components (tank/spare wheel/equipment boxes) is not required
- self-centring frame scale
- Measured data acquisition with only one camera (component part of the AXIS4000)
- Individual software

## Application features

- Variable measuring points
- Individually selectable measuring matrix (especially in the deformation area)



Different positions of the frame scale on the vehicle frame



Construction behind the vehicle



Suspension on the vehicle frame

# PRODUCT INFORMATION

## Simple measured data acquisition

Simple and clear on-screen instructions explain the individual work steps to the operator. The measured data are thereby directly shown in a diagram.

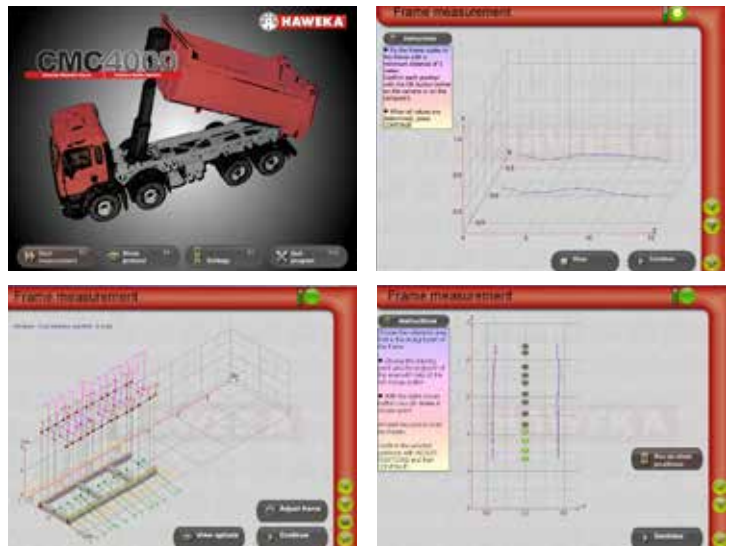


## Clearly arranged menu structure

Depending on the application, the evaluated results can be called up with different information concerning horizontal, vertical deformation or torsion in various types of representation.

## Graphic representation in 2D and 3D

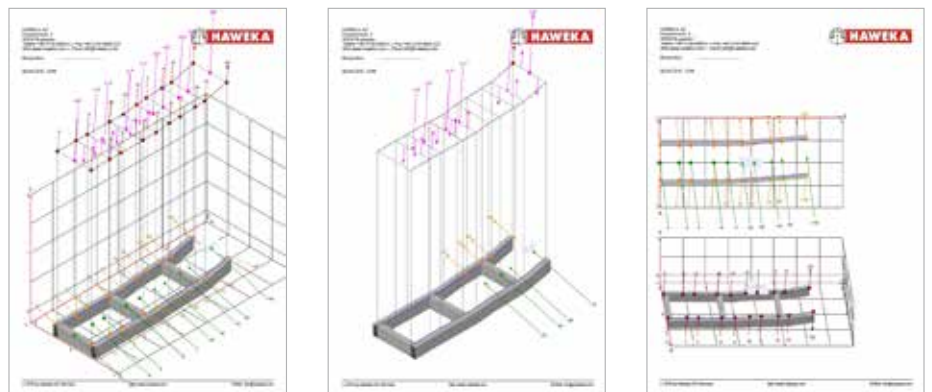
The clearly arranged menu structure in the display options enables quick switching between the 2D and 3D displays at any time



## Measurement record / overviews

All individual measurements can be shown and printed out in the measurement record.

Depending on the application records with different expressiveness can be created for a measurement.





## Product overview

### Frame alignment CMC4000 Solo

Frame scale, Camera stand, Radio camera, Charging station, FM radio transmitter, Software CMC4000

**Part no.: 924 000 111**



### Upgrade kit CMC4000 for AXIS4000

Frame scale, Camera stand, Software CMC4000

**Part no.: 924 000 101 (433 MHz)**

**Part no.: 924 000 112 (2,4 GHz)**



## Technical data

Measuring range of frame	Measuring range	Measuring accuracy
Horizontal frame offset	0 - 750 mm	± 0,5 mm
Vertical frame offset	0 - 750 mm	± 0,5 mm
Measurable frame torsion	± 18°	± 0,2°
Measurable frame length	max. 18 Meter	-
Measurable frame width	750 - 1350 mm	-