

# ProBike II – *Series 805*

The Motorcycle Clamping Device



Instructions  
Product Motorcycle  
Data



GEB 001 024



## Table of Contents

1.	Introduction.....	4
2.	Product Overview - ProBike Modular Systems .....	5
2.1	The ProBike Modular System ECO .....	5
2.2	The ProBike Modular System STANDARD.....	6
2.3	The ProBike Modular System PROFESSIONAL .....	7
3.	Use of the quick clamp unit <i>QuickFix</i> .....	8
4.	Installation of Clamping Device on the Balancer .....	9
4.1	Installation on a Balancer with Fixed Basic Device, Example: HAWEKA B 9000 ..	9
4.2	Installation on balancer with conical attachment, example: Beissbarth micron 860.....	11
5.	Instructions of Use for Special Centering Kits .....	12
6.	Motorcycle Data .....	17
6.1	ProBike Examples of Use.....	17
7.	Motorcycle Data .....	18
8.	Spare Parts and Accessories .....	31

Issue: 10 2020

These operating instructions are subject to alterations.

### **PROBIKE II – Version 6.3**

Illustrations: HAWEKA AG / 30938 Burgwedel

This publication may be reproduced in any form or by any means.

## 1. Introduction

Dear Customer,

Motorcycle manufacturers regularly launch new motorcycles in order to offer individual solution to any driver's desire.

New technical developments e.g. mono lever wheels, combined with modern designs have lead to much wider tyres for motorcycles.

**HAWEKA** is keeping pace with these technical developments and we have made it our aim to react quickly to technical change and to work on the necessary solutions.

The motorcycle clamping device **ProBike** has therefore been constantly improved during the last years.

With the new **ProBike II** you have purchased one of the newest innovations from **HAWEKA**.

- \* Precise balancing results
- \* Simple and fast mounting
- \* Safe and easy handling
- \* Modular upgrade kits

In the course of these innovations we have also optimized the balancer attachment, reworked the design and developed additional new centering kits.

By the use of different internal adaptors it is possible to mount the ProBike without any problem to most balancers in the market.

Please see more details on the following pages.

Our adaptors enable you both to work professionally and to the best possible results.

I trust you will enjoy working with our Motorcycle Clamping Device **ProBike II** and have many happy motorcycle customers.

Yours sincerely,

A handwritten signature in black ink, appearing to read "D. Warkotsch".

Dirk Warkotsch  
(Managing Director)

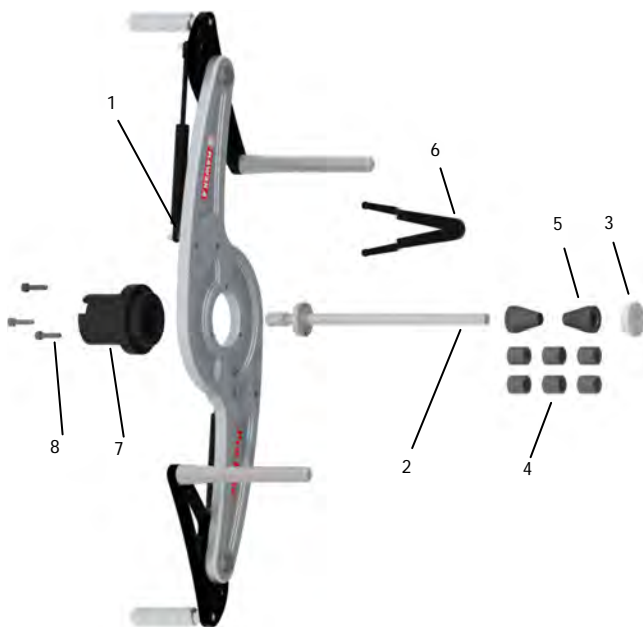
## 2. Product Overview - ProBike Modular Systems

### 2.1 The ProBike Modular System ECO

The ProBike Modular System ECO is the basic equipment to balance motorcycle wheels on a balancer.

It consists of the new ProBike base plate including chuck (when necessary) and a 14 mm motorcycle shaft, as well as 2 centering cones, spacers and pin spanner. An adaptor board is not included.

P/No. 805 XXX\* 010



No.	Description	Qty.	P/No.
1	ProBike Base Plate	1	803e008 009
2	Motorcycle Shaft 14 mm	1	870eXXX 140
3	Knurled Nut M14	1	840e140 001
4	Spacer 15 mm	6	860e150 002
5	Centering Cone	2	850e140 001
6	Pin Spanner	1	990e008 001
7	Conical Chuck	1	800e999 004
8	Screw M6x25	3	D00912 06025

Position 2 is different depending on type of balancer!  
 XXX = 997 = conical balancer attachment  
 XXX = 010 = cylindrical balancer attachment  
 Position 7 is different depending on type of balancer!



Note

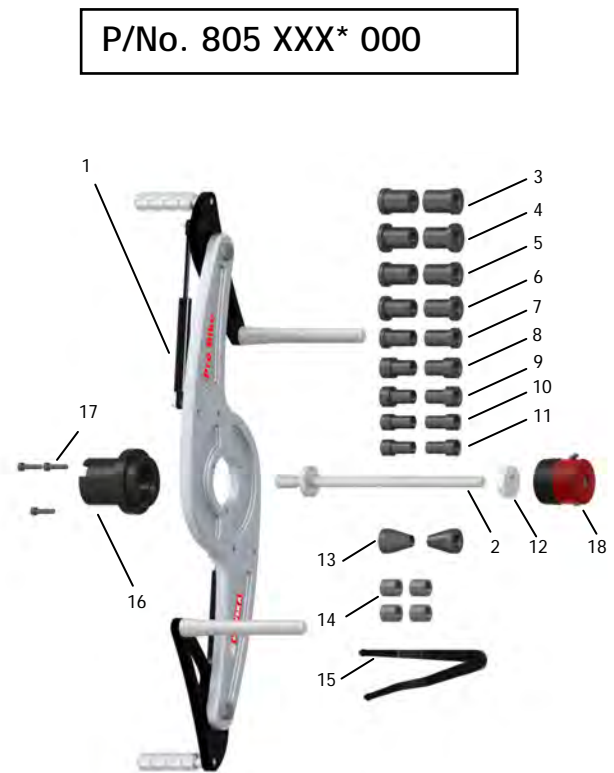
Xxx\* = Machine Code - Diameter of Balancer Shaft

- (28mm = 280)
- (36mm = 360)
- (38mm = 380)
- (40mm = 400)
- Balancers with conical attachment XXX = 818

## 2.2 The ProBike Modular System STANDARD

With the ProBike Modular System Standard, you have a good kit to balance a great variety of motorcycle wheels. This kit can be upgraded at any time.

**Scooter wheels are clamped without Scooter Adaptors!**



(Picture 805 818 000 with conical chuck)

No.	Description	Qty.	P/No.
1	ProBike Base Plate	1	803e008 009
2	Motorcycle Shaft 14 mm	1	870eXXX* 140
3	Centering Sleeve 28 mm	2	860e140 280
4	Centering Sleeve 26 mm	2	860e140 261
5	Centering Sleeve 25 mm	2	860e140 250
6	Centering Sleeve 22 mm	2	860e140 220
7	Centering Sleeve 20 mm	2	860e140 200
8	Centering Sleeve 19 mm	2	860e140 190
9	Centering Sleeve 17 mm	2	860e140 170
10	Centering Sleeve 16 mm	2	860e140 160
11	Centering Sleeve 15 mm	2	860e140 150
12	Knurled Nut M14	1	840e140 001
13	Centering Cone	2	850e140 001
14	Spacer 15 mm	2	860e150 001
15	Pin Spanner	1	990e008 001
16	Conical Chuck	1	800e999 004
17	Screw M6x25	3	D00912 06025
18	QuickFix Ø 14 mm	1	890 140 001
	Adaptor Board Standard <i>(without picture)</i>	1	900 008 142

Position 2 is different depending on type of balancer!  
 XXX = 997 = conical balancer attachment  
 XXX = 010 = cylindrical balancer attachment  
 Position 15 is different depending on type of balancer!



xxx\* = Machine Code - Diameter of Balancer Shaft

- (28mm = 280)
- (36mm = 360)
- (38mm = 380)
- (40mm = 400)

Balancers with conical attachment

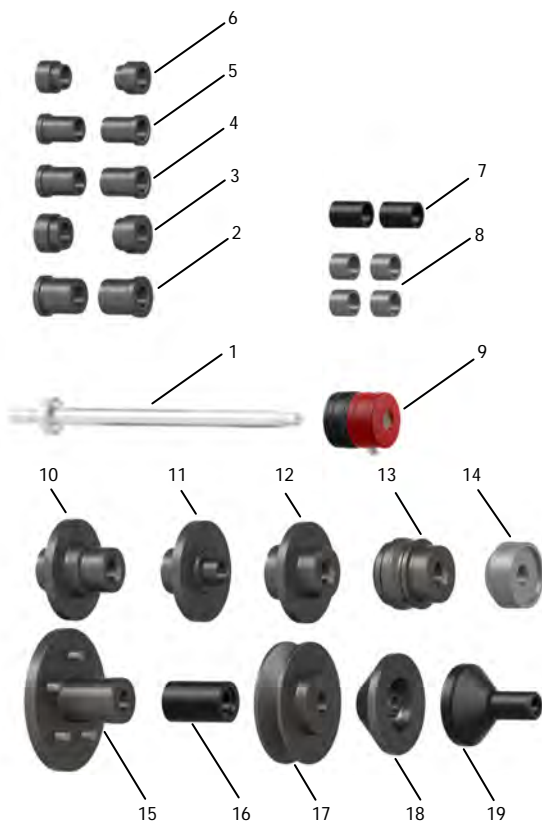
XXX = 818

## 2.3 The ProBike Modular System PROFESSIONAL

The upgrade kit Modular System PROFESSIONAL is more individual in handling and offers the possibility to balance even more mono lever/single sided motorcycle wheels. New in this kit is the QuickFix for 19 mm motorcycle wheels.

The Modular System PROFESSIONAL can be upgraded by purchasing the Modular System EXPERT which includes additional shafts.

P/No. 805 XXX\* 001



No.	Description	Qty	P/No.
1	Motorcycle Shaft 19 mm	1	870eXXX 190
2	Centering Sleeve 35 mm	2	860e190 350
3	Centering Sleeve 32 mm Suzuki	2	860e190 320
4	Centering Sleeve 28 mm	2	860e190 280
5	Centering Sleeve 25,4 mm	2	860e190 254
6	Centering Sleeve 25 mm Suzuki	2	860e190 250
7	Pressure Piece Harley Davidson	2	860e190 260
8	Spacer Ø 20 mm	4	860e200 002
9	QuickFix for Ø 19 mm	1	890 190 001
10	Centering Sleeve Ducati / Triumph	1	860e190 004
11	Centering Sleeve Honda	1	860e190 018
12	Centering Sleeve MV Agusta / Honda	1	860e190 011
13	Centering Sleeve Aprilia / BMW / Ducati / Yamaha GTS 1000	1	860e190 012
14	Centering Cone / Pressure Piece	1	850e190 001
15	Centering Sleeve Triumph	1	860e190 022
16	Spacer Ø 19 mm	1	860e190 007
17	Centering Sleeve BMW II (ab 2005)	1	860e190 020
18	Centering Sleeve BMW I (bis 2005)	1	860e140 015
19	Pressure Piece Honda / BMW	1	860e140 006
	Adaptor Board Profi (without picture)		900 008 143

Position 1 is different depending on type of balancer!  
 XXX = 997 = conical balancer attachment  
 XXX = 010 = cylindrical balancer attachment



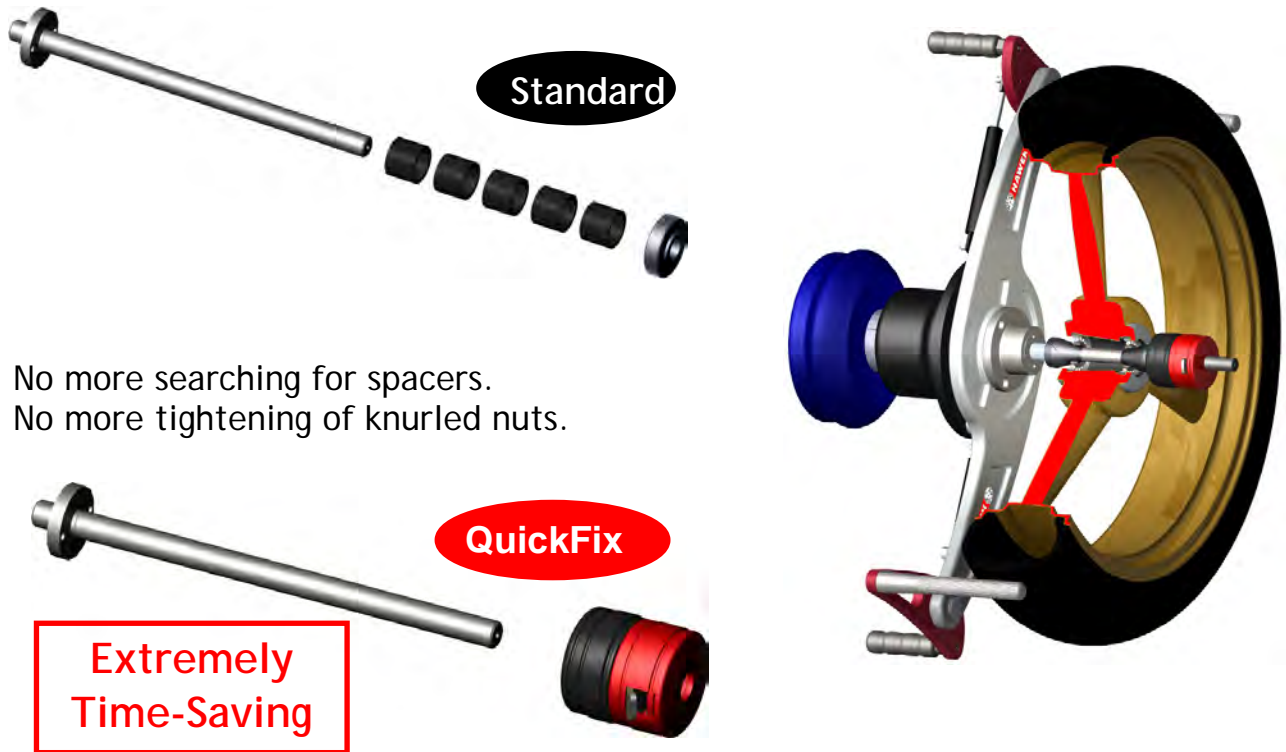
Depending on the type of balancer, you need to have either a conical or a cylindrical attachment.

\*xxx -> 818 = conical attachment, 008 = cylindrical attachment

### 3. Use of the quick clamp unit *QuickFix*

The *Quick-Fix* can be used for all ProBike Motorcycle Clamping Devices.

The use of the *Quick-Fix* considerably simplifies the clamping of motorcycle wheels on the balancer.



The *QuickFix* is slid onto the shaft and the wheel is pressed against the centering unit. For correct fit of the centering unit it is then necessary to turn the black plastic ring of the *Quick Fix* clockwise against the centering unit.

Only through fixation of the black plastic ring against the centering unit, a safe clamping of the wheel is guaranteed.



**Note**

After the balancing process only loosen the black ring on the *QuickFix* (turn anticlockwise), press the rocking lever and remove the *QuickFix* from the shaft.

For motorcycle shafts Ø 14 mm

Part Number: 890 140 001

For motorcycle shafts Ø 19 mm

Part Number: 890 190 001



## 4. Installation of Clamping Device on the Balancer

### 4.1 Installation on a Balancer with Fixed Basic Device, Example: HAWEKA B 9000

#### 1.) Dismantling of Centering Shaft from Basic Device



Put a screw driver in the bore of the threaded shaft and apply (if available) the foot brake. After loosening of the threaded shaft, it can be screwed off the basic device and removed.



#### 2.) Preparation of the ProBike Base Plate



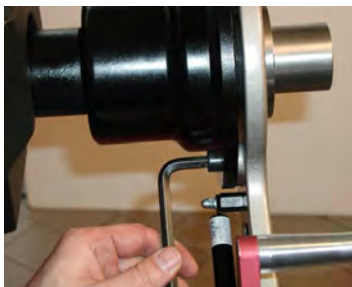
Fix the adaptor depending on the type of wheel balancer to the base plate.



#### 3.) Installation of the ProBike Base Plate at the Basic Device



Put the ProBike base plate with the adaptor to the basic device of the balancer and then fix it with screws on the surface of the basic device.



The screws are fixed from behind the basic device and tightened evenly. Take care that the ProBike base plate is fixed flush with the basic device.

#### 4.) Installation of the Centering Shaft



Attach the centering shaft manually and fix it with the included pin spanner.

#### 5.) Clamping of the Wheel on the ProBike

In order to achieve the best balancing results, the wheel has to be mounted as close as possible to the side of the balancer. Take care that the wheel does not touch the ProBike base plate and is only centered by the centering sleeves.



According to the type of wheel, use the correct centering sleeves to attach the wheel correctly. Then lock the centering unit with the QuickFix.



The cantilevers can now be released onto the wheel.



#### 6.) Elongation of the Distance Gauge



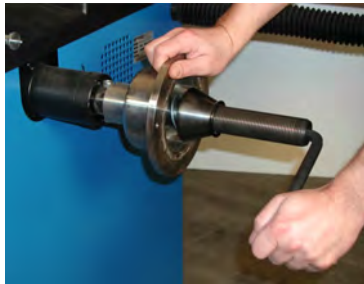
Depending on the balancer used, it is sometimes necessary to extend the distance gauge. You either put on an extension or replace the gauge by a longer one.



In our example with the B 9000 an extension is needed (Part Number BAZ0027780)

Ask your balancer distributor for more information!

## 4.2 Installation on balancer with conical attachment, example: Beissbarth micron 860



Loosen the allen screw that attaches the centering shaft. After the screw has been removed, the basic device can also be removed.



Mount the conical adaptor to the ProBike base plate.



Put the ProBike base plate on the conical shaft of the wheel balancer and then attach the centering shaft manually. Fix it with the included pin spanner.



According to the type of wheel, use the correct centering sleeves to attach the wheel correctly. Then lock the centering unit with the QuickFix.



In order to achieve the best balancing results, the wheel has to be mounted as close as possible to the side of the balancer.



Note

Take care that the wheel does not touch the ProBike base plate and is only centered by the centering sleeves



## 5. Instructions of Use for Special Centering Kits



### Special Centering Kits

You now own the ProBike modular system ECO, or even better, the modular system STANDARD, and want to balance motorcycles with mono lever wheels.

In this case you will need the modular system PROFESSIONAL, in which all the special centering adaptors are included. Should you require only one special centering adaptor, this can of course also be purchased individually.

These special adaptors are mounted, except for one adaptor, on a 19 mm motorcycle shaft.



Note

When using only one special adaptor, you need in any case the 19 mm motorcycle shaft and the 19 mm QuickFix!

Shaft depending on type of balancer:

Part Number 870e010 190 = cylindrical attachment

Part Number 870e997 190 = conical attachment

19 mm QuickFix (see page 8)



19 mm motorcycle shaft and 19 mm QuickFix are included in the modular system PROFESSIONAL!

The special motorcycle adaptors have been reworked and optimized in order to be able to balance an ever greater variety of motorcycles.

Please see the following pages for the use of different adaptors.

## HONDA

GL 1800 Gold Wing  
NTV 650 Revere



For rear wheels

**1 x Centering Sleeve: P/No. 860e190 018**

(in the ProBike modular system PROFESSIONAL included)

## BMW

All BMW with mono lever wheels  
until 2005



For rear wheels

**1 x Centering Sleeve: P/No. 860e140 015**

(in the ProBike modular system PROFESSIONAL included)

## BMW

All BMW with mono lever wheels  
from 2005  
BMW R 1200 GS (2004 -)



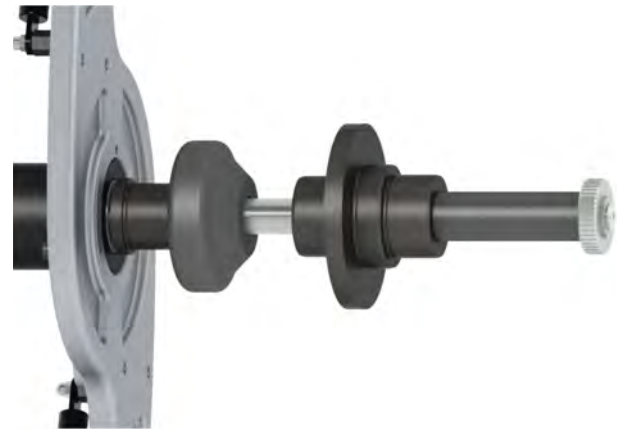
For rear wheels

**1 x Centering Sleeve: P/No. 860e190 020**

(in the ProBike modular system PROFESSIONAL included)

## DUCATI

Monster S2R / S4R (ab 2007 -)  
 Hypermotard 796 (ab 2010 - )  
 Multistrada (2007 - 2009)  
 748 (bis 2003)  
 848 (ab 2008)  
 916 (1995 - 2003)  
 996 (1998 - 2001)  
 998 (2002 - 2003)



## TRIUMPH

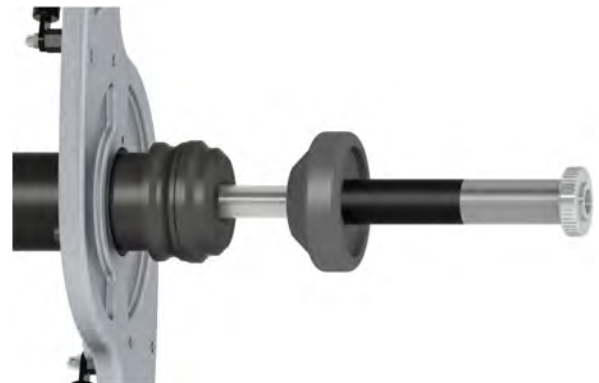
Sprint ST 1050 (2005 - 2011)  
 Sprint RS (ab 2004)  
 Speed Triple 1050 (bis 2010)  
 Daytona 955i  
 T 509  
 T 595

For rear wheels (to be used face and back!)

**1 x Centering Sleeve: P/No. 860e190 004** (necessary: Pressure Piece 850e190 001)  
 (included in the modular system Professional)

## DUCATI

Monster 796  
 Monster 1100 / S / EVO (2009 -)  
 Hypermotard 1100 / S (2007 -)  
 Streetfighter / S (2010 -)  
 Streetfighter 848 (2012 -)  
 1098 (2007 - 2009)  
 1198 (2009 - 2011)  
 1199 Panigale (2012-)  
 Multistrada 1200 (2011 -)  
 Diavel (2011 -)



## APRILIA

RST Futura (2001 - 2003)

## BMW

F 650 CS Scarver (2002 - 2003)

## YAMAHA

GTS 1000

**1 x Centering Sleeve: P/No. 860e190 012**  
 (included in the modular system Professional)

## TRIUMPH

Sprint GT (2011 -)  
Speed Triple (2011 -)



Tiger Explorer (2012 -)  
Tiger Explorer XC (2013 -)



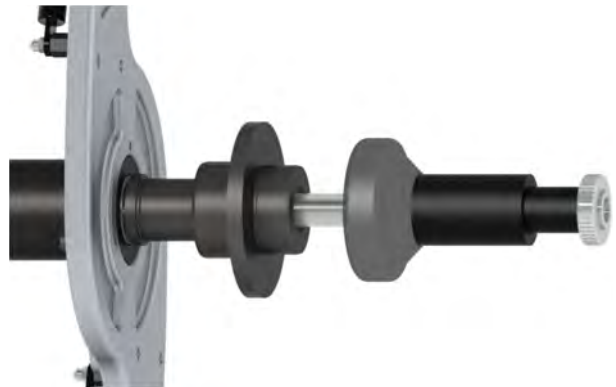
For rear wheels (to be used face and back!)  
**1 x Centering Sleeve: P/No. 860e190 022**  
(included in the modular system Professional)

## MV AGUSTA

all Model (from 2000)

## HONDA

VFR 750  
VFR 800  
VFR V-TEC  
Crossrunner (2011 - )  
CB 1000 R (2008 - )



For rear wheels (to be used face and back!)  
**1 x Centering Sleeve: P/No. 860e190 011**  
(included in the modular system Professional)

For front wheels **MV AGUSTA**  
**1 x Set of Centering Sleeves: P/No. 860 190 350**  
(included in the modular system Professional)



## HARLEY DAVIDSON

Bad Boy	Softail Springer	Heritage Softail Classic
Dyna Super Glide	Sportster 883 ST	Softail Deuce
Dyna Glide Low Rider	Sportster 883 Hugger	Heritage Springer
Dyna Glide Conv.	Sportster 1200	Night Train
Dyna Wide Glide	Sportster 1200 Custom	Softail Custom
Electra Glide Classic	Sportster 1200 Sport	Softail Standard
Fat Boy		

For front and rear wheels  
**1 x Set of Spacers: P/No. 860 190 260**  
 (included in the modular system Professional)



### Additional for Harley Davidson Modell from 2008

For front and rear wheels  
**1 x Set of Centering Sleeves: P/No. 860 190 250**  
 (included in the modular system Professional)



## HARLEY DAVIDSON

### V-Rod

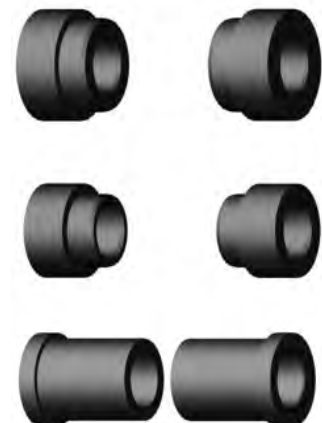
For front and rear wheels  
**2 x Centering Sleeve: P/No. 860 190 254**  
 (included in the modular system Professional)



## SUZUKI

- GSX-R 600
- GSX-R 750
- GSX-R 1000
- GSX R 1300 HAYABUSA

For front and rear wheels:  
**1 x Set of Centering Sleeves: P/No. 860 190 320**  
**1 x Set of Centering Sleeves: P/No. 860 190 250**  
**1 x Set of Centering Sleeves: P/No. 860 190 280**



(included in the modular system Professional)



## 6. Motorcycle Data

The following data do not represent the complete field of use of the ProBike clamping device. We just want to help you for your daily work. Sorted according to the motorcycle manufacturer, you will easily find the necessary data about the relevant motorcycle.

We get this data from the motorcycle manufacturers then we update the following date continually.

Please accept our apologies for some models that are missing. It is not always easy to obtain all the information immediately and add them to our list. Therefore we take no responsibility for any inaccuracies contained herein.

### Survey on Manufacturers:

**Aprilia / BMW / Buell / Ducati**

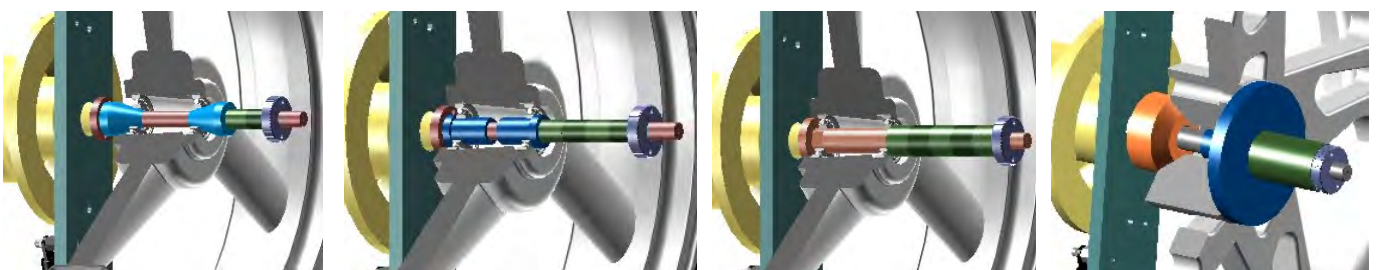
**Enfield / Gilera / Harley Davidson**

**Honda / Jawa / Kawasaki / KTM**

**Laverda / Moto Guzzi / MV Agusta**

**MZ / Suzuki / Triumph / Yamaha**

### 6.1 ProBike Examples of Use



Shaft with  
Centering Cones

Shaft with  
Centering Sleeves

Motorcycle Shaft with  
same  $\varnothing$  as the  
Floating bearing

Shaft with Special  
Centering Kit

## 7. Motorcycle Data

<b>Aprilia</b> MODEL	AXLE DIAMETER		MONO LEVER		REMARKS Special Adaptors (P.No.)
	front	rear	front	rear	
Classic 125	15	17	-	-	
RS 125	20	20	-	-	-
ETX 125	15	17	-	-	-
RX 125	17	17	-	-	-
RS 250	20	20	-	-	-
Pegaso 650	17	17	-	-	-
Pegaso 650 Garda	17	17	-	-	-
Moto 6.5	17	17	-	-	-
RSV mille	20	25	-	-	-
RSV mille SP	20	25	-	-	-
SL 1000 Falco	20	25	-	-	-
RST Futura	20	-	-	-	Set 860 190 012

<b>BMW</b> MODEL	AXLE DIAMETER		MONO LEVER		REMARKS Special Adaptors (P.No.)
	front	rear	front	rear	
G 650 Xchallenge	20	20	-	-	-
G 650 Xcountry	20	20	-	-	-
G 650 Xmoto	20	20	-	-	-
F 650 (all types)	17	19	-	-	-
F 650 CS SCARVER	20	-	-	X	For rear Wheel: 1x 860 190 012
K 75 RT	25	-	-	X	For rear Wheel: 1x 860e141 005
K 1100 LT	25	-	-	X	For rear Wheel: 1x 860e141 005
K 1100 RS	25	-	-	X	For rear Wheel: 1x 860e141 005
R 850 R / 850 C	20	-	-	X	For rear Wheel: 1x 860e141 005
R 850 GS	20	-	-	X	For rear Wheel: 1x 860e141 005
R 100 R	25	-	-	X	For rear Wheel: 1x 860e141 005
R 100 RT Classic	25	-	-	X	For rear Wheel: 1x 860e141 005
R 1100 R	20	-	-	X	For rear Wheel: 1x 860e141 005
R 1100 RT	20	-	-	X	For rear Wheel: 1x 860e141 005
R 1100 S	20	-	-	X	For rear Wheel: 1x 860e141 005
R 1100 RS	20	-	-	X	For rear Wheel: 1x 860e141 005
R 100 PD Classic	25	-	-	X	For rear Wheel: 1x 860e141 005
R 1100 GS	20	-	-	X	For rear Wheel: 1x 860e141 005
R 1150 RT	20	-	-	X	For rear Wheel: 1x 860e141 005
R 1150 RS	20	-	-	X	For rear Wheel: 1x 860e141 005
R 1150 GS	20	-	-	X	For rear Wheel: 1x 860e141 005
R 1150 GS Adventure	20	-	-	X	For rear Wheel: 1x 860e141 005
R 1150 R Rockster	20	-	-	X	For rear Wheel: 1x 860e141 005
R 1200 C	20	-	-	X	For rear Wheel: 1x 860e141 005
R 1200 C Independent	20	-	-	X	For rear Wheel: 1x 860e141 005
R 1200 GS (since 2004)	25	-	-	X	For rear Wheel: 1x 860e141 005
K 1200 LT	20	-	-	X	For rear Wheel: 1x 860e141 005
K 1200 RS	20	-	-	X	For rear Wheel: 1x 860e141 005
K 1200 GT	20	-	-	X	For rear Wheel: 1x 860e141 005

<b>BMW</b> MODEL	AXLE DIAMETER		MONO LEVER		REMARKS Special Adaptors (P/No.)
	front	rear	front	rear	
K 1200 S (from 2005)	25	-	-	X	For rear Wheel: 1x 860e141 005
K 1200 R (from 2005)	25	-	-	X	For rear Wheel: 1x 860e141 005
K 1200 R Sport	25	-	-	X	For rear Wheel: 1x 860e141 005
K 1200 C (from 2005)	20	-	-	X	For rear Wheel: 1x 860e141 005
HP2 Megamoto	25	-	-	X	For rear Wheel: 1x 860e141 005

<b>BUELL</b> MODEL	AXLE DIAMETER		MONO LEVER		REMARKS Special Adaptors (P/No.)
	front	rear	front	rear	
M2 Cyclone	17	25	-	-	-
S1 Lightning/White L.	17	25	-	-	-
X1 Lightning	17	25	-	-	-
S3/S3 Thunderbolt	17	25	-	-	-
Firebolt XBR (since 02)	25	30	-	-	-
Firebolt XB9S (since 03)	25	30	-	-	-
Lightning XB12S	25	30	-	-	-
Firebolt XB12R	25	30	-	-	-
Lightning City XB9SX	25	30	-	-	-

<b>Ducati</b> MODEL	AXLE DIAMETER		MONO LEVER		REMARKS Special Adaptors (P/No.)
	front	rear	front	rear	
Monster 600 (all types)	17	25	-	-	-
Monster 620 (all types)	17	25	-	-	-
Monster 750 (all types)	17	25	-	-	-
SS 750 ie Nuda/Carenata	17	25	-	-	-
748	-	-	-	X	For rear Wheel: 1x 860e190 004
748 BIPOSTO	-	-	-	X	For rear Wheel: 1x 860e190 004
748 R/S	-	-	-	X	For rear Wheel: 1x 860e190 014
749 / S / R / Dark	25	30	-	-	-
Monster 800	17	25	-	-	-
Monster 900 / 900 S	17	25	-	-	-
Supersport 800 / 1000	17	25	-	-	-
SS 900 ie Nuda/Carenata	17	25	-	-	-
Monster 1000 S	17	25	-	-	-
ST 2 / ST4	17	25	-	-	-
916	25	-	-	X	For rear Wheel: 1x 860e190 004
916 Biposto	25	-	-	X	For rear Wheel: 1x 860e190 004
996 (all types)	25	-	-	X	For rear Wheel: 1x 860e190 004
998 (all types)	25	-	-	X	For rear Wheel: 1x 860e190 004
999 (all types) since 2003	25	30	-	-	-
Multistrada since 2003	25	-	-	-	For rear Wheel: 1x 860e190 004

<b>Enfield</b> MODEL	AXLE DIAMETER		MONO LEVER		REMARKS Special Adaptors (P.No.)
	front	rear	front	rear	
325 Diesel	Fixed axle	17	-	-	-
Bullet 500 /Deluxe	Fixed axle	17	-	-	-

<b>Gilera</b> MODEL	AXLE DIAMETER		MONO LEVER		REMARKS Special Adaptors (P.No.)
	front	rear	front	rear	
Saturno 500	12	12	-	-	-
RC 600	10	15	-	-	-
RC 600 C	10	15	-	-	-
Nordcape	12	15	-	-	-
XRT 600	12	12	-	-	-

<b>Harley Davidson</b> MODEL	AXLE DIAMETER		MONO LEVER		REMARKS Special Adaptors (P.No.)
	front	rear	front	rear	
Bad Boy	19,05	19,05	-	-	1x 860 190 007
Dyna Super Glide	19,05	19,05	-	-	1x 860 190 007
Dyna Glide Low Rider	19,05	19,05	-	-	1x 860 190 007
Dyna Glide Conv.	19,05	19,05	-	-	1x 860 190 007
Dyna Wide Glide	19,05	19,05	-	-	1x 860 190 007
Dyna Super Glide T-Sport	19,05	19,05	-	-	1x 860 190 007
Dyna Super Glide T-Custom	19,05	19,05	-	-	1x 860 190 007
Electra Glide (all types)	19,05	19,05	-	-	1x 860 190 007
Fat Boy (all types)	19,05	19,05	-	-	1x 860 190 007
Heritage Springer	19,05	19,05	-	-	1x 860 190 007
Softail Custom	19,05	19,05	-	-	1x 860 190 007
Softail Springer	19,05	19,05	-	-	1x 860 190 007
Softail Springer Classic	19,05	19,05	-	-	1x 860 190 007
Softail Springer Delux (from 2005)	19,05	19,05	-	-	1x 860 190 007
Sportster 883 St	19,05	19,05	-	-	1x 860 190 007
Sportster 883 Hugger	19,05	19,05	-	-	1x 860 190 007
Sportster 883 Custom (from 2005)	19,05	19,05	-	-	1x 860 190 007
Sportster 883 /Low (from 2005)	19,05	19,05	-	-	-
Sportster 1200 (all types)	19,05	19,05	-	-	1x 860 190 007
Softail Standard	19,05	19,05	-	-	1x 860 190 007
Road King	19,05	19,05	-	-	1x 860 190 007
Night Train	19,05	19,05	-	-	1x 860 190 007
Heritage Softail Classic	19,05	19,05	-	-	1x 860 190 007
Softail Deuce	19,05	19,05	-	-	1x 860 190 007
Heritage Springer	19,05	19,05	-	-	1x 860 190 007
V-ROD	25,4	25,4	-	-	1x 860 190 014

<b>Honda</b> MODEL	<b>AXLE DIAMETER</b>		<b>MONO LEVER</b>		<b>REMARKS</b> Special Adaptors (P/.No.)
	front	rear	front	rear	
CA 125 Rebel	15	15	-	-	
City Fly	15	15	-	-	-
VT 125 C/C2 Shadow	15	15	-	-	-
NSR 125 R	15	15	-	-	-
CB Two Fifty	15	15	-	-	-
CMX 250 Rebel	15	15	-	-	-
CB 1	20	20	-	-	-
CB 500	15	17	-	-	-
GB 500	15	17	-	-	-
Hornet /Hornet S 600	20	17	-	-	-
CBR 600 F	20	20	-	-	-
XR 600	17	20	-	-	-
XL 600 V Transalp	15	17	-	-	-
VT 600 Shadow	20	17	-	-	-
Deauville 650	20	-	-	X	For rear Wheel: 1x 860e190 008
SLR 650	20	17	-	-	-
NTV 650	20	-	-	X	For rear Wheel: 1x 860e190 008
NX 650 Dominator	15	17	-	-	-
XL 650 V Transalp	17	17	-	-	-
Vigor 650	15	17	-	-	-
CB 750	20	17	-	-	-
CB Seven Fifty	20	17	-	-	-
XR V 750 Africa Twin	17	17	-	-	-
VT 750	20	20	-	-	-
VF 750 C/C2 Shadow ACE	20	20	-	-	-
VFR 750 F	20	-	-	X	For rear Wheel: 1x 860e190 011
VFR 800	20	-	-	X	For rear Wheel: 1x 860e190 011
VFR V-TEC	20	-	-	X	For rear Wheel: 1x 860e190 011
HORNET 900	-	-	-	-	-
CBR 900 RR	20	20	-	-	-
CBR 900 RR (since 2002)	-	-	-	-	-
CB 1000 F	20	20	-	-	-
CBR 1000 F	20	20	-	-	-
VTR 1000 SP1 SP2	22	25	-	-	-
XL 1000 V Varadero	-	-	-	-	-
VTR 1000 Firestorm	20	20	-	-	-
ST 1100	20	20	-	-	-
VT 1100 C	20	20	-	-	-
VT 1100 C2 Shadow ACE	20	20	-	-	-
VT 1100 C3 Shadow/Aero	20	20	-	-	-
X-Eleven	20	20	-	-	-
CBR 1100 XX S.Blackbird	20	20	-	-	-
VTX	20	20	-	-	-
GL 1500	20	20	-	-	-
GL 1800 Goldwing	20	-	-	X	For rear Wheel: 1x860 190 008
F6 C	20	20	-	-	-
Pan European	-	-	-	-	-

<b>JAWA</b> MODEL	<b>AXLE DIAMETER</b>		<b>MONO LEVER</b>		<b>REMARKS</b> Special Adaptors (P/No.)
	front	rear	front	rear	
JAWA 11 (Perak)	15	15	-	-	-
JAWA 353.3	15	15	-	-	-
JAWA 353.04/354.04	15	15	-	-	-
JAWA 590 (Californian)	15	15	-	-	-
JAWA 361 (Californian)	15	15	-	-	-
JAWA 362 (Californian)	15	15	-	-	-
JAWA 559 / 360	15	15	-	-	-
JAWA 634	15	15	-	-	-
JAWA 638/639	15	15	-	-	-
JAWA 640	15	15	-	-	-
CZ/JAWA 453 (125ccm) 1968	15	15	-	-	-
CZ 488 (125ccm)1991	15	15	-	-	-
CZ /JAWA 450 (175ccm) 1968	15	15	-	-	-
CZ 487 (180ccm) 1991	15	15	-	-	-

<b>Kawasaki</b> MODEL	<b>AXLE DIAMETER</b>		<b>MONO LEVER</b>		<b>REMARKS</b> Special Adaptors (P/No.)
	front	rear	front	rear	
BN125 A	15	15	-	-	-
Eliminator 125	-	-	-	-	-
KMX 125	-	-	-	-	-
BJ 250 A/B	15	17	-	-	-
EL 250/E	15	17	-	-	-
EL 250 B	15	17	-	-	-
EL 252 F	15	17	-	-	-
Estrella 250	15	17	-	-	-
KLR 250	15	17	-	-	-
KLX 250	15	20	-	-	-
KLX 250 E	15	20	-	-	-
EX 305 A	15	17	-	-	-
ZX 400 L	20	20	-	-	-
ZXR 400	20	20	-	-	-
EX 500 A/B/E/D	15	17	-	-	-
EN 500	15	17	-	-	-
GPZ 500 S	15	17	-	-	-
EN 500 D	15	17	-	-	-
EN 500 A	15	17	-	-	-
EN 500 B	15	17	-	-	-
EN 500 C	15	17	-	-	-
ER 5 Twister	15	17	-	-	-
ER 500 A/B/C/D	15	17	-	-	-
KLE 500 A	15	17	-	-	-
Zephyr 550	15	17	-	-	-

Continued

<b>Kawasaki</b> MODEL	AXLE DIAMETER		MONO LEVER		REMARKS Special Adaptors (P/No.)
	front	rear	front	rear	
ZR 550 B	15	17	-	-	-
ZX 550 A	15	17	-	-	-
GPZ 600 R	15	17	-	-	-
GPX 600 R	15	17	-	-	-
ZZR 600	20	20	-	-	-
NINJA ZX 6 R	20	20	-	-	-
ZX-6R ab 2003	25	25	-	-	-
ZX-6-RR ab 2003	25	25	-	-	-
ZL 600 A	15	17	-	-	-
ZX 600 A	15	17	-	-	-
ZX 600 C	15	17	-	-	-
ZX 600 D	17	17	-	-	-
ZX 600 E	20	20	-	-	-
ZX 600 F	20	20	-	-	-
ZX 600 G	25	25	-	-	-
ZX 600 H	25	25	-	-	-
ZX 600 J	25	25	-	-	-
EJ 650 A	15	17	-	-	-
EJ 650 A1	15	17	-	-	-
EJ 650 ¾	17	17	-	-	-
EJ 650 C	17	17	-	-	-
W 650	-	-	-	-	-
KLR 650 C	15	17	-	-	-
KLX 650	15	20	-	-	-
KLX 650 C	15	20	-	-	-
Z 750 (ab 2004)	20	20	-	-	-
ZR 7	-	-	-	-	-
ZR 750 C	17	17	-	-	-
ZR 750 D	15	17	-	-	-
ZR 750 F	17	20	-	-	-
ZR 750 H	17	20	-	-	-
ZX 750 F	15	20	-	-	-
ZX 750 G	15	17	-	-	-
ZX 750 L	25	25	-	-	-
ZX 750 P	25	25	-	-	-
ZXR 750	25	25	-	-	-
ZXR 750 R	25	25	-	-	-
NINJA ZX 7R	25	25	-	-	-
Zephyr 750	17	17	-	-	-
VN 800 A	15	17	-	-	-
VN 800 B	20	17	-	-	-
VN 800 C	15	17	-	-	-
VN 800 Classic	20	17	-	-	-
VN 800 Drifter	20	17	-	-	-
VN 800 E	20	17	-	-	-
GPZ 900 R	-	-	-	-	-
NINJA ZX 9 R C+D	20	20	-	-	-

Continued

<b>Kawasaki</b> MODEL	AXLE DIAMETER		MONO LEVER		REMARKS Special Adaptors (P/.No.)
	front	rear	front	rear	
ZX 900 A	15	17	-	-	-
ZX 900 B	25	25	-	-	-
ZX 900 C	20	20	-	-	-
ZX 900 D	20	20	-	-	-
ZX 900 E	25	25	-	-	-
ZX 900 F	25	25	-	-	-
1000 GTR	17	20	-	-	-
ZG 1000 A1-9	15	20	-	-	-
ZG 1000 A11-1	17	20	-	-	-
ZR 1100 A	17	20	-	-	-
ZR 1100 B	17	20	-	-	-
ZR 1100 C	25	20	-	-	-
ZX 1000 A	15	20	-	-	-
ZX 1000 E	17	20	-	-	-
ZX 1100 C	20	20	-	-	-
ZX 1100 D	25	20	-	-	-
ZX 1100 E	17	20	-	-	-
ZX 1100 G	25	20	-	-	-
ZX 10 R (since 2004)	20	20			
ZRX 1100	-	-	-	-	-
ZZR 1100	25	20	-	-	-
NINJA ZX 12R	-	-	-	-	-
ZR 1200 A / B / C	25	20	-	-	-
ZX 12 A	25	25	-	-	-
ZX 12 B	25	25	-	-	-
ZX 1200 A	25	25	-	-	-
VN 15 SE	15	20	-	-	-
VN 1500 B	15	20	-	-	-
VN 1500 C	15	20	-	-	-
VN 1500 Classic (all types)	20	20	-	-	-
VN 1500 D	20	20	-	-	-
VN 1500 Drifter	-	-	-	-	-
VN 1500 H	20	20	-	-	-
VN 1500 F	20	20	-	-	-
VN 1500 J	20	20	-	-	-
VN 1500 L	20	20	-	-	-
VN 1500 N	20	20	-	-	-
VN 1500 P	25	25	-	-	-
VN 1500 Tourer	-	-	-	-	-
VN 1600 Classic Bj. 2003	25	20			
VN 1600 Mean Streak	25	20			
VN 2000	25	20			



<b>KTM</b> MODEL	<b>AXLE DIAMETER</b>		<b>MONO LEVER</b>		<b>REMARKS</b> Special Adaptors (P/No.)
	front	rear	front	rear	
125 EXE Enduro	17	20	-	-	-
125 EXE Supermoto	17	20	-	-	-
125 LC2 Enduro	17	20	-	-	-
Sting 125	17	20	-	-	-
LC4 400 Enduro	17	20	-	-	-
LC4 620 (all types)	17	20	-	-	-
LC4 620 Supermoto	17	20	-	-	-
LC4 640 Enduro	17	20	-	-	-
LC4 640 Adventure R	17	20	-	-	-
Duke I	17	20	-	-	-
Duke II (640)	17	20	-	-	-
950 Adventure (LC8)	26	25			-

All KTM since 2003 have a 26 mm front axle.

<b>LAVERDA</b> MODEL	<b>AXLE DIAMETER</b>		<b>MONO LEVER</b>		<b>REMARKS</b> Special Adaptors (P/No.)
	front	rear	front	rear	
Lynx 650	-	-	-	-	-
650 Sport	15/17	20	-	-	-
650 Formula	15/17	20	-	-	-
668	15/17	20	-	-	-
Strike 750/Black Strike	-	-	-	-	-
750 Sport	-	-	-	-	-
750 Super Sport	-	-	-	-	-
750 S Formula	-	-	-	-	-

<b>Moto Guzzi</b> MODEL	<b>AXLE DIAMETER</b>		<b>MONO LEVER</b>		<b>REMARKS</b> Special Adaptors (P/No.)
	front	rear	front	rear	
Nevada 750	20	17	-	-	-
California 1100	20	20	-	-	-
California 1100 i	20	20	-	-	-
California 1100 EV/Spezial	-	-	-	-	-
California 1100 i Jackal	-	-	-	-	-
1000 Daytona	17	20	-	-	-
1000 Daytona RS	20	20	-	-	-
1000 Daytona Racing	17	20	-	-	-
1000 Quota	17	20	-	-	-
1000 Quota ES	-	-	-	-	-
1100 Sport	17	20	-	-	-
1100 Sport injection	20	20	-	-	-
V10 Centauro/Sport /GT	-	-	-	-	-
Sport/Corsa 1100 i	-	-	-	-	-
V11 Sport	-	-	-	-	-

MV AGUSTA MODEL	AXLE DIAMETER		MONO LEVER		REMARKS Special Adaptors (P./No.)
	front	rear	front	rear	
F4 750 (all types)	35	-	-	-	For rear Wheel: 2x 860e190 011
750 Brutale	35	-	-	-	For rear Wheel: 2x 860e190 011
					For rear Wheel: 1x 860 190 350 (all types)

MZ /MZ-B /IFA MODEL	AXLE DIAMETER		MONO LEVER		REMARKS Special Adaptors (P./No.)
	front	rear	front	rear	
<b>Before 1992:</b>	15	15	-	-	-
IFA/MZ RT 125	15	15	-	-	-
ES 125/150	15	15	-	-	-
TS 125/150	15	15	-	-	-
TS 250	15	15	-	-	-
ES 175	15	15	-	-	-
ES 250/2	15	15	-	-	-
ETS 250	15	15	-	-	-
ETZ 250	15	15	-	-	-
ETZ 251	15	15	-	-	-
ETS 300/1	15	15	-	-	-
<b>since 1992 :</b>					-
RT 125 Tour	15	15	-	-	-
RT 125 SX/SM	15	17	-	-	-
RT 125 (since 2003)	20	17	-	-	-
RT 125 Classic (since 2003)	17	17	-	-	-
ETZ 125	15	15	-	-	-
ETZ 250	15	15	-	-	-
500 R	15	15	-	-	-
500 Tour	15	15	-	-	-
500 FUN VR	15	15	-	-	-
Skorpion Tour	17	20	-	-	-
Skorpion Traveller	17	20	-	-	-
Skorpion Cup	17	20	-	-	-
Baghira HR/Forest	17	20	-	-	-
Baghira St.Moto/Bl.Panther	17	20	-	-	-
Mastiff/Warrior	17	20	-	-	-
Gespann Silver Star 500	15	15	-	-	-
MZ 1000 S	25	25	-	-	-
MZ 1000 SF (from 2005)	25	25	-	-	-

Suzuki MODEL	AXLE DIAMETER		MONO LEVER		REMARKS Special Adaptors (P.No.)
	front	rear	front	rear	
DR 125 SE	12	15	-	-	-
GN 125	12	15	-	-	-
GZ 125 Marauder	-	-	-	-	-
VL 125 Intruder	-	-	-	-	-
GN 250	15	15	-	-	-
GZ 250 Marauder	-	-	-	-	-
VL 250 Intruder	-	-	-	-	-
DR 350 (all)	15	20	-	-	-
DR-Z 400 (all)	17	20	-	-	-
GSF 400 Bandit	15	17	-	-	-
GS 500 E	15	17	-	-	-
GS 500 since 2001	15	17	-	-	-
GSF 600 Bandit / S	17	20	-	-	-
Bandit 650 / S	17	20	-	-	-
GSX 600 F	15	17	-	-	-
GSX-R 600	25	28	-	-	For front and rear Wheel: 860 190 009
RF 600 R/RU	22	24	-	-	-
DR 600 S/R	15	17	-	-	-
DR 650 R/RE/RSE	15	17	-	-	-
DR 650 SE	17	20	-	-	-
XF 650 Freewind	17	20	-	-	-
LS 650/P Savage	15	17	-	-	-
SV 650 / 650 S	17	17	-	-	-
VS 600 GL Intruder	15	17	-	-	-
GSX 750	-	-	-	-	-
GSX 750 F	15	17	-	-	-
GSX-R 750 W	20	20	-	-	-
GSX-R 750 (until 2001)	25	28	-	-	For front and rear Wheel: 860 190 009
GSX-R 750 (since 2002)	25	32	-	-	For front and rear Wheel: 860 190 009
DR 800 S BIG	15	17	-	-	-
VX 800	15	17	-	-	-
VZ 800 Marauder	17	17	-	-	-
VS 800 GL Intruder	15	17	-	-	-
RF 900 R/RS2	20	20	-	-	-
GSX-R 1000 (bis 02)	25	32	-	-	For front and rear Wheel: 860 190 009
GSX-R 1000 (03 / 04 / 05)	25	28	-	-	For front and rear Wheel: 860 190 009
DL 1000 V-Strom	20	20	-	-	-
SV 1000 / 1000 S	25	28	-	-	-
TL 1000 S	25	28	-	-	-
GSX 1100 G	17	20	-	-	-
GSX 1100 F	17	20	-	-	-
GSX-R 1100 W	20	20	-	-	-
GSF 1200/S/SA (Bandit)	20	24	-	-	For rear Wheel: 860 190 240
GSX 1200	-	-	-	-	-
GSX 1300 R Hayabusa	25	32	-	-	For front and rear Wheel: 860 190 009
VS 1400 GLP Intruder	15	17	-	-	-
VL 1500 LC Intruder	-	-	-	-	-

Triumph MODEL	AXLE DIAMETER		MONO LEVER		REMARKS Special Adaptors (P/No.)
	front	rear	front	rear	
TT 600	20	20	-	-	-
Trident 750	25	20	-	-	-
Daytona 675	20	20	-	-	-
Daytona Super II	25	20	-	-	-
Daytona 900	25	20	-	-	-
Adventurer 900	25	20	-	-	-
Legend TT	25	20	-	-	-
Thunderbird 900	25	20	-	-	-
Thunderbird Sport	25	20	-	-	-
Trident 900	25	20	-	-	-
Sprint ST	25	-	-	X	For rear Wheel: 1x 860e190 004
Sprint RS	25	20	-	-	-
Speed Triple	25	-	-	X	For rear Wheel: 1x 860e190 004
Trophy 900	25	20	-	-	-
Tiger 900	17	20	-	-	-
Daytona 955i	25	-	-	X	For rear Wheel: 1x 860e190 004
Bonneville + T100	17	20	-	-	-
T 509	25	-	-	X	For rear Wheel: 1x 860e190 004
T 595	25	-	-	X	For rear Wheel: 1x 860e190 004
Tiger 1050	25	-	-	-	-
Trophy 1200	25	20	-	-	-
Daytona 1200	25	20	-	-	-
America/Speedmaster	25	20	-	-	-
Thruxton 900	17	20	-	-	-
ROCKET III	20	20	-	-	-

Yamaha MODEL	AXLE DIAMETER		MONO LEVER		REMARKS Special Adaptors (P/No.)
	front	rear	front	rear	
DT 125 R	15	20	-	-	-
SR 125	15	15	-	-	-
TDR 125	15	17	-	-	-
TW 125	15	17	-	-	-
XV 125	15	15	-	-	-
TZR 125 / 250	15	15	-	-	-
TDR 250	15	15	-	-	-
XV 250	15	15	-	-	-
RD 350	12	15	-	-	-
XT 350	15	17	-	-	-
XS 400	15	17	-	-	-
WR 400 F	20	22	-	-	-
RD 500	15	17	-	-	-
SR 500 all types	15	17	-	-	-
XP 500 T max. bj. 2002	14	14	-	-	-
XV 500	15	15	-	-	-
XV 535	17	15	-	-	-
XJ 550	15	17	-	-	-
XZ 550	15	17	-	-	-

Continued

Yamaha MODEL	AXLE DIAMETER		MONO LEVER		REMARKS Special Adaptors (P/No.)
	front	rear	front	rear	
Fazer 600	17	20	-	-	-
FZR 600	15	17	-	-	-
FZR 600 R	17	20	-	-	-
YZF 600 R Thundercat	17	20	-	-	-
YZF R6	22	28	-	-	-
TT 600 S/R	17	20	-	-	-
XJ 600 S/N	17	17	-	-	-
XJ 600	15	17	-	-	-
XT 600	15	17	-	-	-
XT 600	15	17	-	-	-
XT 600 E	15	17	-	-	-
XT 600 Z	15	17	-	-	-
XT 600 Z	15	17	-	-	-
XT 600 Z	15	17	-	-	-
SRX 600	15	17	-	-	-
XJ 650	15	17	-	-	-
XS 650	17	20	-	-	-
XS 650 SE	17	20	-	-	-
XVS 650	17	15	-	-	-
SZR 660	17	15	-	-	-
XTZ 660	15	17	-	-	-
FZ 750	15	17	-	-	-
FZ 750	15	17	-	-	-
FZR 750 R (Type 3CU)	15	17	-	-	-
FZR 750 R (Type 3PJ)	17	20	-	-	-
FZX 750	15	17	-	-	-
XJ 750	15	17	-	-	-
XJ 750	15	17	-	-	-
XS 750	17	20	-	-	-
XS 750 SE	15	17	-	-	-
XTZ 750	15	17	-	-	-
XV 750	15	17	-	-	-
XV 750	15	17	-	-	-
YZF 750	22	28	-	-	-
YZF R7	22	28	-	-	-
TDM 850	17	17	-	-	-
TRX 850	17	20	-	-	-
XS 850	17	20	-	-	-
XJ 900	15	17	-	-	-
XJ 900 S	17	17	-	-	-
FZR 1000	15	17	-	-	-
FZR 1000	17	20	-	-	-
FZR 1000 year 91-93	17	20	-	-	-
FZR 1000 year 94-	22	20	-	-	-
YZF 1000 R Thunderace	22	28	-	-	-
YZF R1	22	28	-	-	-
FZS 1000 (RN061)	22	28	-	-	-

Continued

Yamaha MODEL	AXLE DIAMETER		MONO LEVER		REMARKS Special Adaptors (P/.No.)
	front	rear	front	rear	
FZS 1000 FAZER (Bj.2002)	17	28	-	-	-
GTS 1000	LK100	20	X	-	For front Wheels: 1x 860e190 006
XV 1000	15	20	-	-	-
BT 1100 Bulldog	17	17	-	-	-
FJ 1100	15	20	-	-	-
XS 1100 (all types)	17	20	-	-	-
XV 1100	15	17	-	-	-
XVS 1100	17	17	-	-	-
FJ 1200 (all types)	15	20	-	-	-
XJR 1200	17	20	-	-	-
XVZ 12 T	17	20	-	-	-
V-max	17	20	-	-	-
T-Max / XP500 (SJ011)	15	17	-	-	-
FJR 1300 (RP041)	22	20	-	-	-
FJR 1300 (model 2002)	17	22	-	-	-
XJR 1300 A	22	20	-	-	-
XVZ 13 T	17	20	-	-	-
XVZ 1300 A	22	20	-	-	-
XVZ 1300 TF	22	20	-	-	-
XV 1600	22	20	-	-	-
ROAD STAR WARRIOR	22	20	-	-	-
XT 125 R	15	15	-	-	-
XT 125 X	15	15	-	-	-
YBR 125	15	15	-	-	-
XT 660 R	17	17	-	-	-
XT 660 X	17	17	-	-	-
YZF-R6 (2005)	-	-	-	-	-
FZ 6	22	28	-	-	-
MT-01	22	28	-	-	-

## 8. Spare Parts and Accessories

### Spare Parts

**Gas Pressure Spring**  
Part Number DU GA150 209



**Set of Cantilevers**  
Part Number 803e008 010  
2 pieces



### 8.2 Accessories

**Adaptor Board ProBike Standard**  
Part Number: 900 008 142



**Adaptor Board ProBike Professional**  
Part Number: 900 008 143





**HAWEKA**

Kokenhorststraße 4 ♦ 30938 Burgwedel

☎ 05139/8996-0    📠 05139/8996-222

[www.haweke.com](http://www.haweke.com) ♦ [Info@haweke.com](mailto:Info@haweke.com)