



*Premier for the
Automechanika 2018*

AXIS2000

WHEEL ALIGNMENT FOR COMMERCIAL VEHICLES

The wheel alignment system AXIS2000 for the measuring of commercial vehicles is the new evolution of laser wheel alignment with digital data gathering



AXIS2000

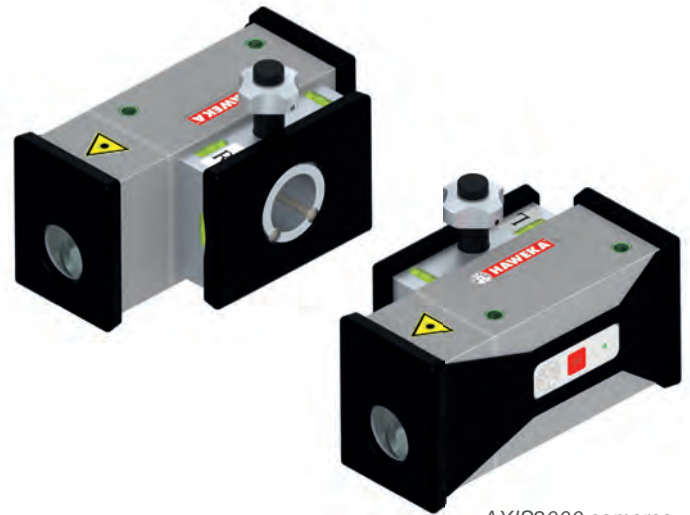
WHEEL ALIGNMENT FOR COMMERCIAL VEHICLES

Product Description

The wheel alignment system AXIS2000 for the measuring of commercial vehicles is the new evolution to digital data gathering. All readings are electronically transferred to an end report.

Product Features

- Measuring of the vehicle is done in its normal driving position, no lifting of the vehicle required
- No runout compensation required
- No requirement to have an extra inclinometer as this is integrated in the measuring head
- Easy mounting on steel wheels with the use of magnets
- Quick clamping device for aluminium wheels
- Quick measuring of total/individual toe, camber, toe out on turns, caster, axle out of square, axle offset and steering gear middle position
- The vehicle chassis centre line is used as reference point for every measurement
- All measurements can be made within 10 minutes including setup
- 1 man use



AXIS2000 cameras
left and right

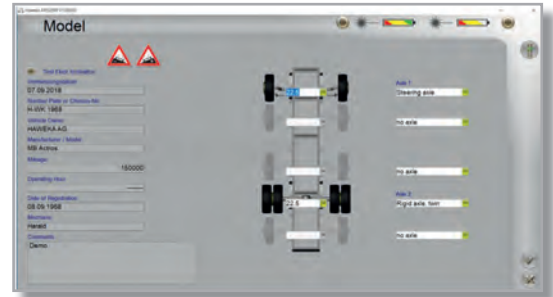


AXIS2000 case for the safe
transportation of the cameras
and the radio server unit

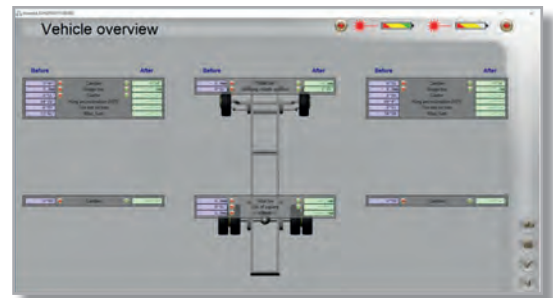


Acquisition of the measuring values

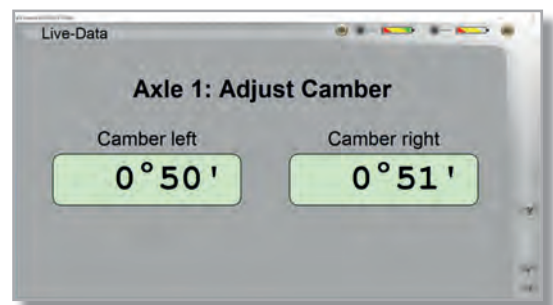
All vehicle data can be selected, quickly and comfortably. With the AXIS2000 it is possible to measure all types of commercial vehicles.



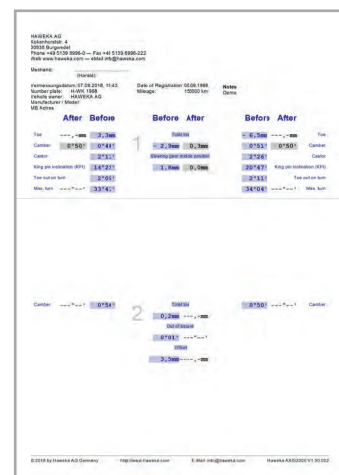
All measurements are started from the vehicle overview screen. All measurements for all axles are shown on one screen.



After the camber measurement is completed there is a live reading option to aid adjustment.



All measured readings are transferred to a finished report which can be printed.



Printed measurement report

 **PRODUCT INFORMATION**

Product overview and scope of delivery

Wheel alignment system AXIS2000 incl. accessories and wooden box

The scope of delivery includes: 1 case, 2 turning plates, 2 wheel alignment clamps, 2 cameras (left and right), 1 radio server unit, 1 USB cable, 1 camera battery charger, 2 floor scales, 2 magnetic scales, 2 mounting aids for alloy rims, 1 USB-Stick for the software, 1 wooden box (not illustrated).

Part No. 923 000 010

