

A red circle containing a white lowercase letter 'i'.

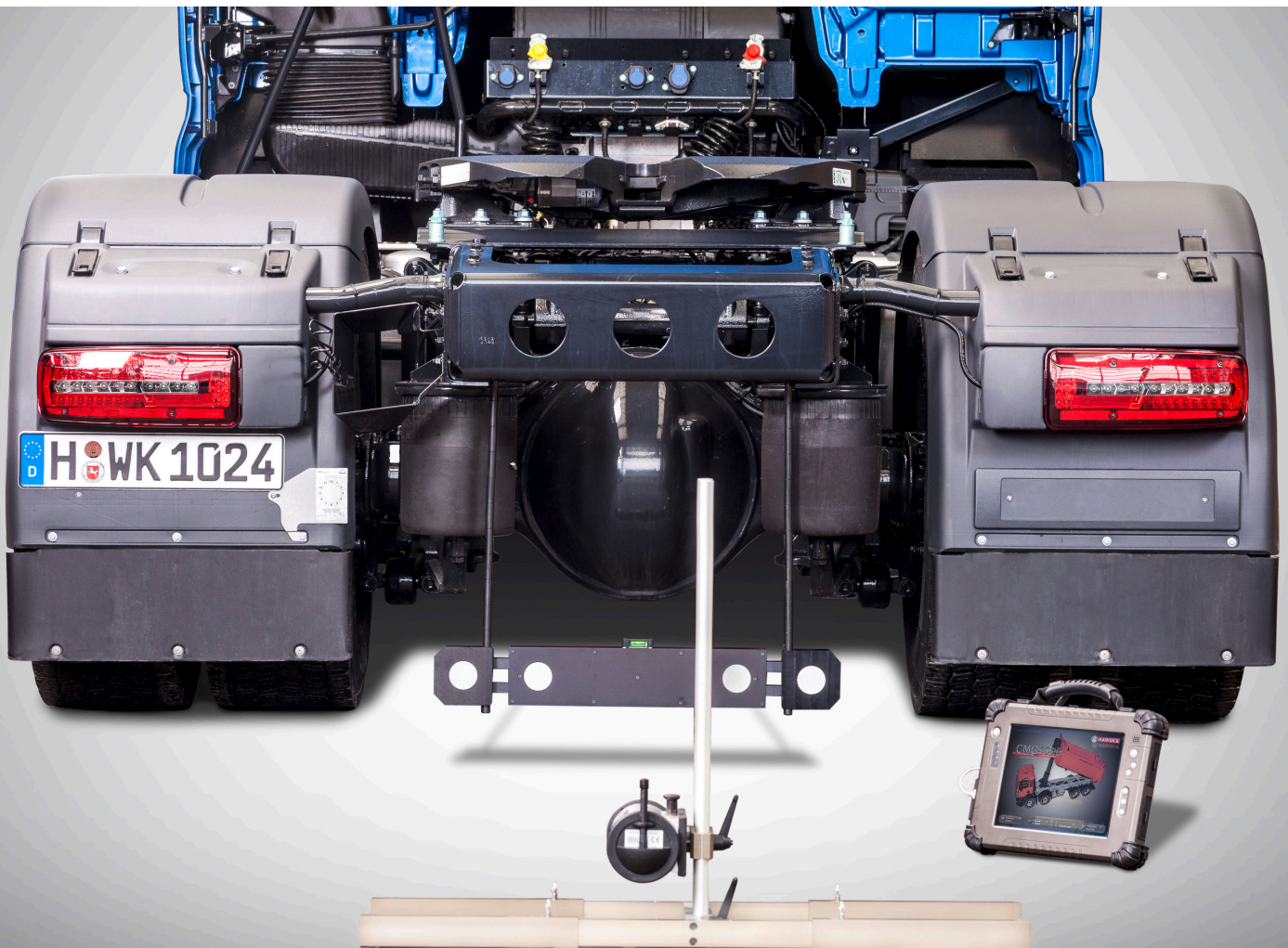
PRODUCT INFORMATION

CMC4000

Chassis Member Check

Camera Radio System

Frame alignment for commercial vehicles
PC-based camera radio system



Product description

The successful AXIS series for axle alignment on commercial vehicles was extended by the mobile frame alignment CMC4000.

This enables problem-free accurate statements concerning the actual status of the vehicle frame.

With the help of the CMC4000 one can record:

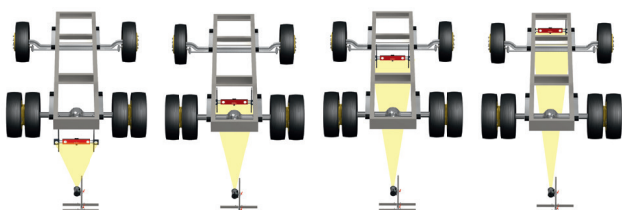
- the **lateral deformation** (horizontal deviation)
- the **height difference** (vertical deviation)
- the **torsion** of the vehicle frame

Product features

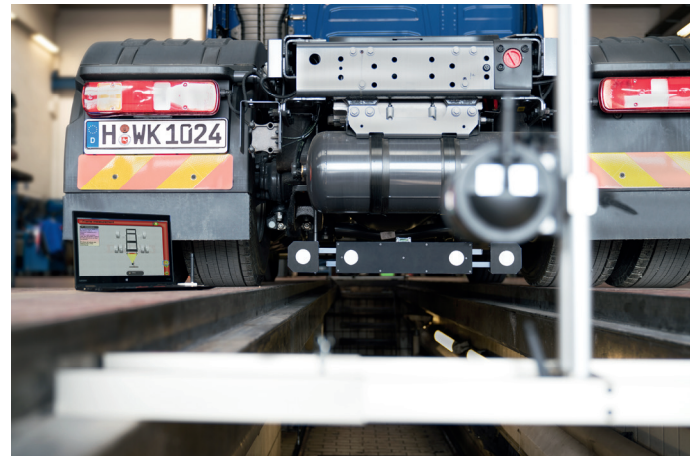
- Quick attachment of frame scale inside the chassis - disassembly of various components (tank/spare wheel/equipment boxes) is not required
- self-centring frame scale
- Measured data acquisition with only one camera (component part of the AXIS4000)
- Individual software

Application features

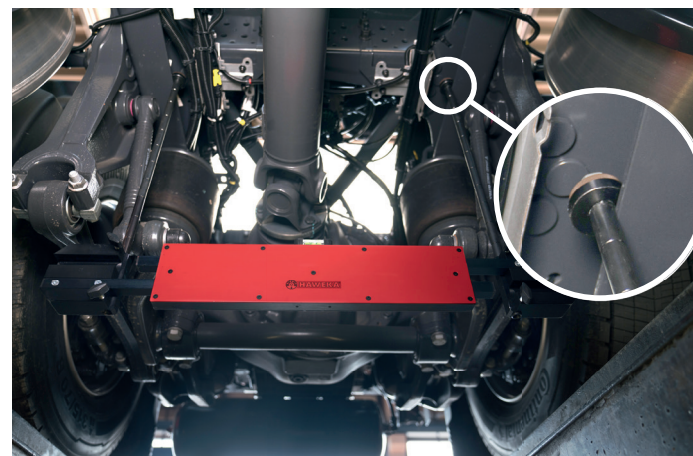
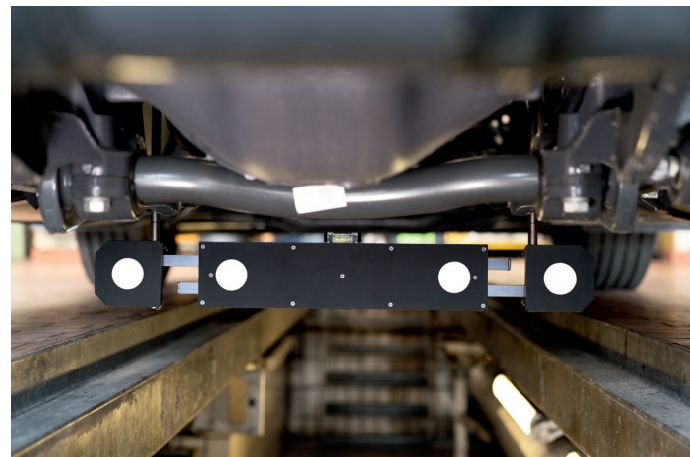
- Variable measuring points
- Individually selectable measuring matrix (especially in the deformation area)



Different positions of the frame scale on the vehicle frame



Construction behind the vehicle



Suspension on the vehicle frame

PRODUCT INFORMATION

Simple measured data acquisition

Simple and clear on-screen instructions explain the individual work steps to the operator. The measured data are thereby directly shown in a diagram.

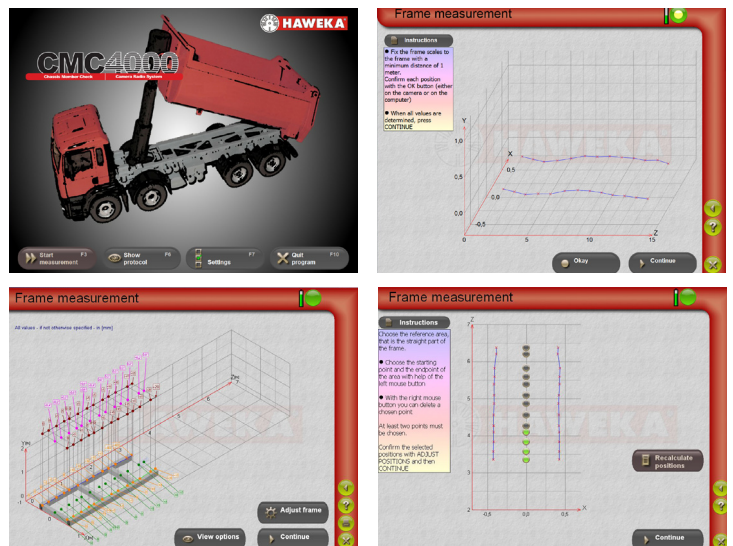


Clearly arranged menu structure

Depending on the application, the evaluated results can be called up with different information concerning horizontal, vertical deformation or torsion in various types of representation.

Graphic representation in 2D and 3D

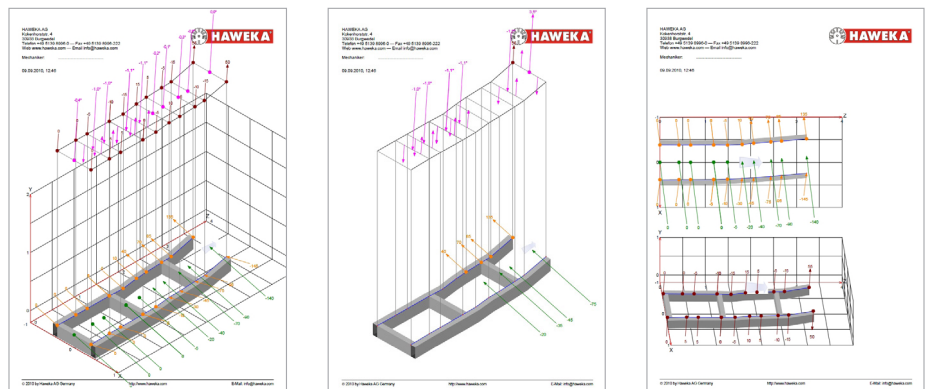
The clearly arranged menu structure in the display options enables quick switching between the 2D and 3D displays at any time



Measurement record / overviews

All individual measurements can be shown and printed out in the measurement record.

Depending on the application records with different expressiveness can be created for a measurement.



Product overview

Frame alignment CMC4000 Solo

Frame scale, Camera stand, Radio camera, Charging station, FM radio transmitter, Software CMC4000

Part no.: 924 000 111

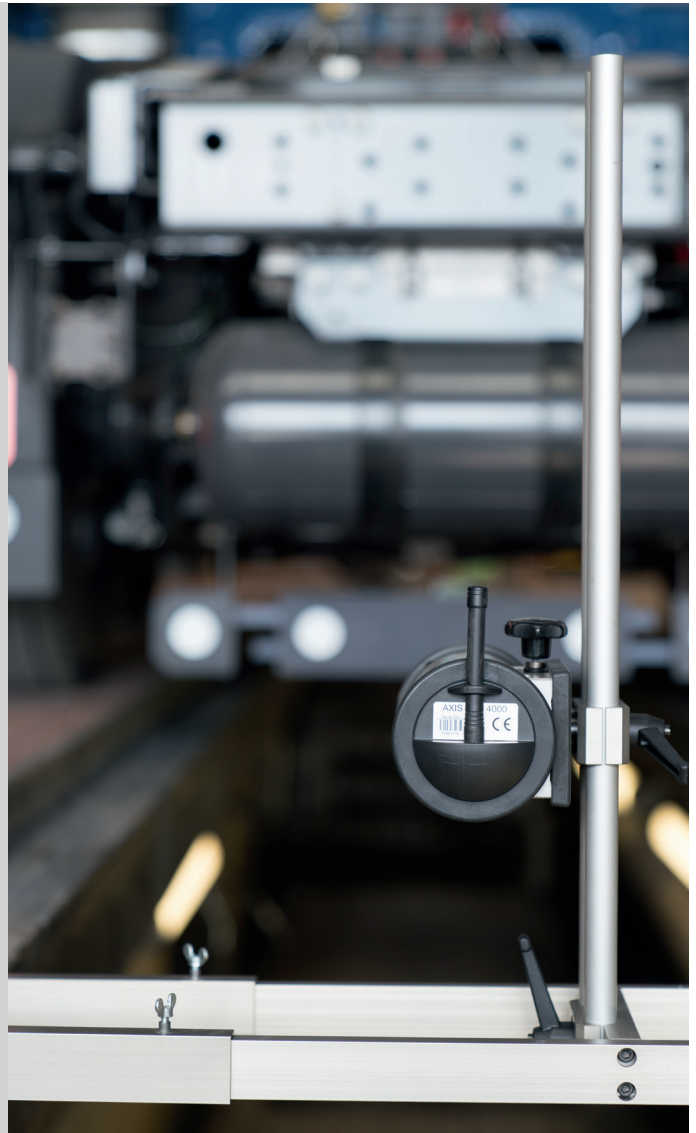
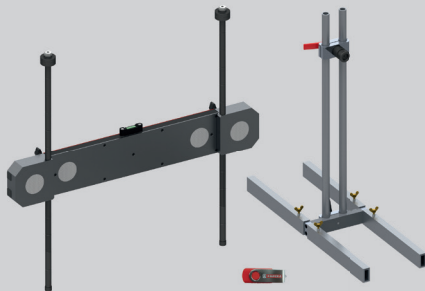


Upgrade kit CMC4000 for AXIS4000

Frame scale, Camera stand, Software CMC4000

Part no.: 924 000 101 (433 MHz)

Part no.: 924 000 112 (2,4 GHz)



Technical data

Measuring range of frame	Measuring range	Measuring accuracy
Horizontal frame offset	0 - 750 mm	± 0,5 mm
Vertical frame offset	0 - 750 mm	± 0,5 mm
Measurable frame torsion	± 18°	± 0,2°
Measurable frame length	max. 18 Meter	-
Measurable frame width	750 - 1350 mm	-